

TECHNICAL SHEET

THE ORGANIZER MUST PROVIDE

1 Grand Piano

(Minimum - Type C6 or equivalent)

SOUND

To be provided according to the venue
Replay if necessary
Acoustic concert possible up to 200 seats

2 piano pickups
(Type C414, KM184 or equivalent)

1 song presentation microphone
Shure KSM9/Beta 87/SM 58 without stand
To be placed on the floor, to the right of the piano.

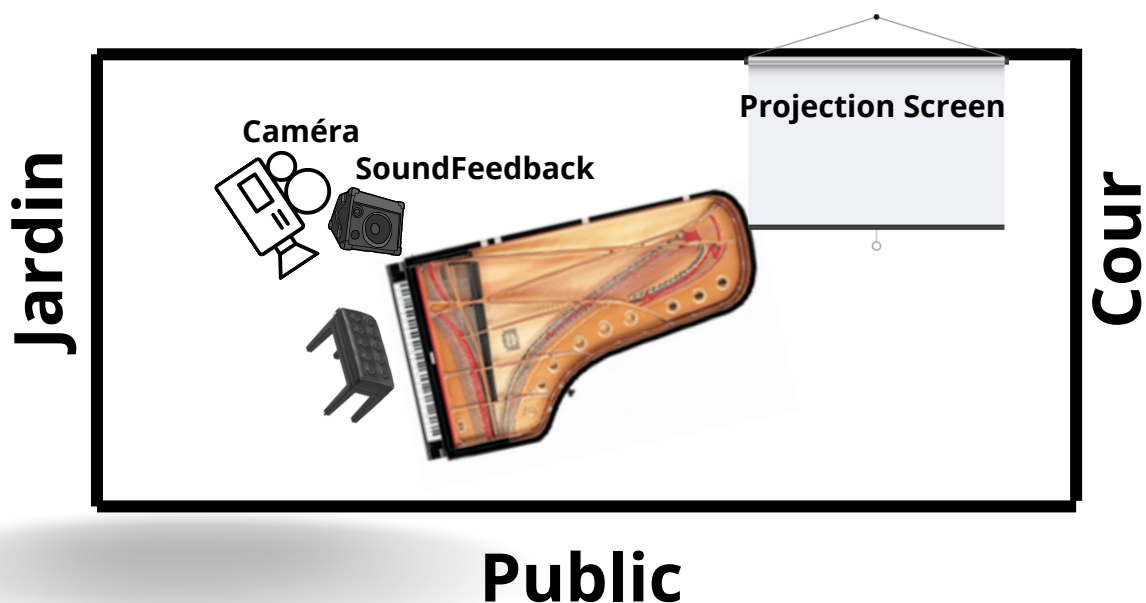
STAGE MONITOR

to be placed on the LEFT of the stool, to the left of the piano bass.

LIGHTS

See diagram P2/P3 - The lighting plan can be completely revised according to the lighting available in the room. Warm lighting is preferable in small rooms (Sepia, etc.).
Please contact us if you have any questions.

PLAN DE SCÈNE



PIERRE-YVES PLAT PIANO SOLO

VIDEO

Projection screen

Minimum size: 2.40m x 1.80m
Video projector / overhead projector - 4000 lumens (minimum)

Camera supplied by artist

Cables required - HDMI VIDEO - Between piano (camera) and video projector

Contact us for more information

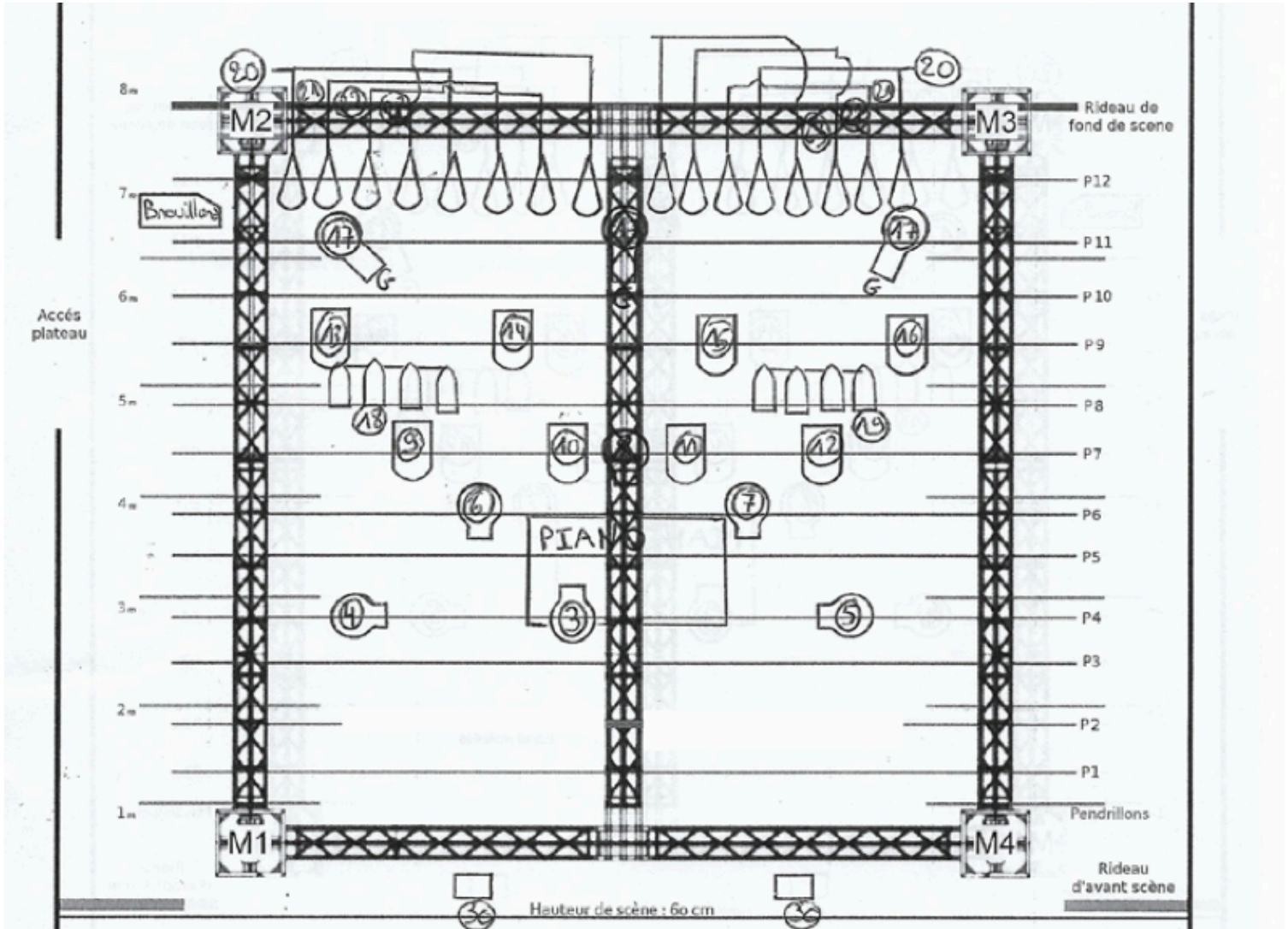
+33 (0)6 89 68 39 64

contact@pierreyvesplat.com

PIERRE-YVES PLAT - PIANO SOLO

For any questions +33 (0)6 89 68 39 64 / contact@pierreyvesplat.com

FIRE PLAN



PLAN DE SCÈNE



□ PC 1 Kw X 15

⬮ Decoupe Longue
1 Kw X 7

⬮ Decoupe Count
1 Kw X 6

⬮ PAR64 Cp62
1 Kw X 16

⬮ Unique x 1

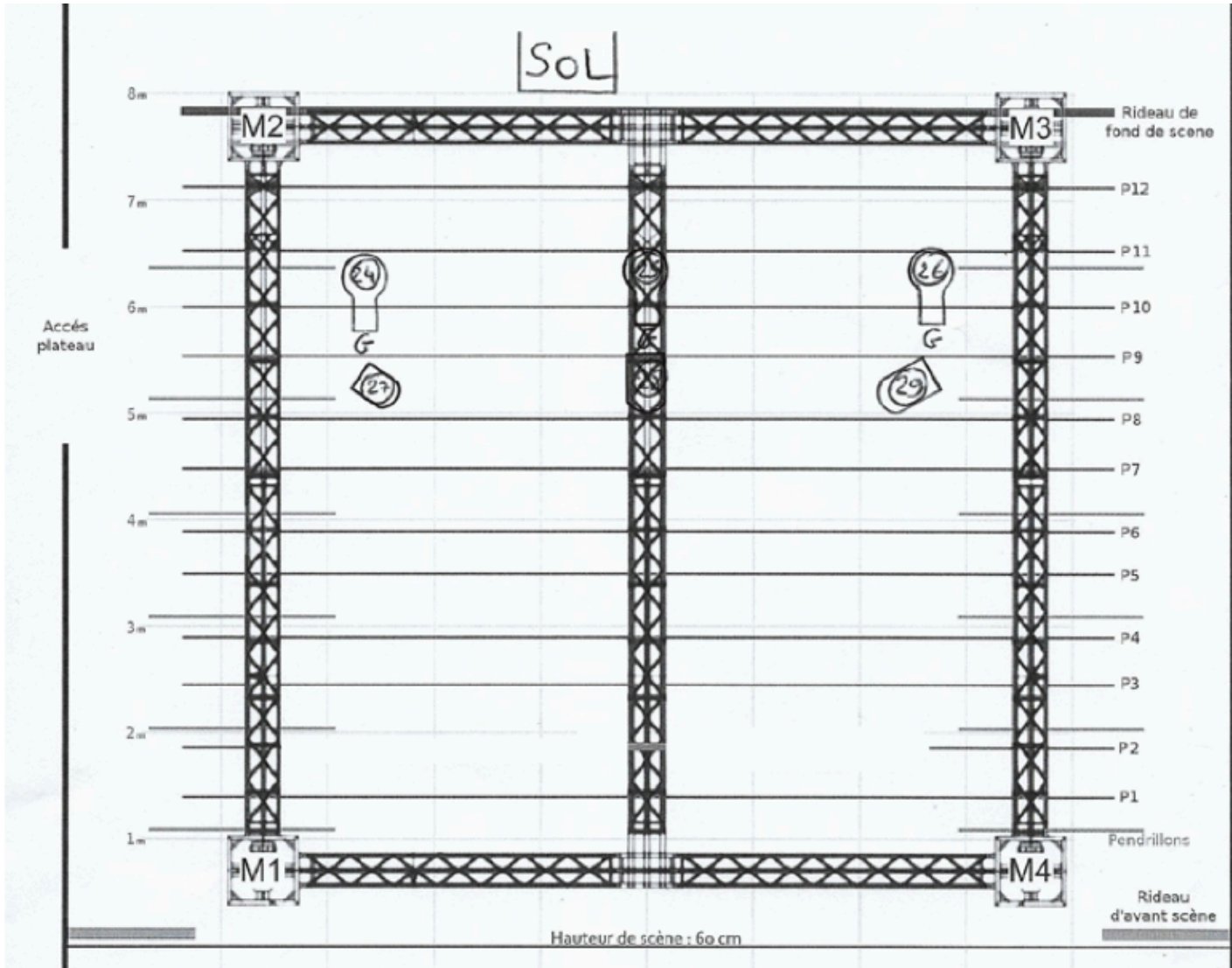
⬮ ACL X 2

□ FL 1300 X 2

Pierre-Yves Platt - Piano Solo

For any questions: 06 89 68 39 64 / contact@pierreyvesplat.com

FIRE / GROUND PLAN



TAGE PLAN

GEL : L 119 x 4 FPAR L 152 x 12 FPC
L 106 x 4 FPAR L 152 x 1 FDec
L 139 x 4 FPAR Gobo x 6
L 058 x 4 FPAR